

## External feature of peripatus.

For Bsc Part - I, Zoology

By Dr. Brijesh Kumar Singh

Asst. Prof. Dept. of Zool.

S.N.S.R.K.S. College

Saharsa.

Introduction:- It is caterpillar like cylindrical and elongated creature which measures from 1.5 to 15 cm in length.

Externally unsegmented body remains covered by soft velvety skin which is thrown in to a number transverse wrinkles and contains numerous conical papillae.

The anterior end of body (which is considered as head composed of 3-segments but not distinct) bears a pair of large annulated antennae, a pair of conical oral papillae and a mid ventral mouth. Mouth is surrounded by a fleshy fold which contains a pair of small horny jaws. The tips of oral papillae bear the openings of pair of slime glands. Dorsal base bears a pair of small eyes.

Both ventrolateral sides of the body bear 14-43 pairs of unsegmented

Stumpy legs which terminate in to a pair of claws. The number of pairs of legs depends on the species and the sex. Ventral base of each leg has 3 to 6 transverse bands (on which the leg rests during walking) on distal end while a nephridiopore on inner base.

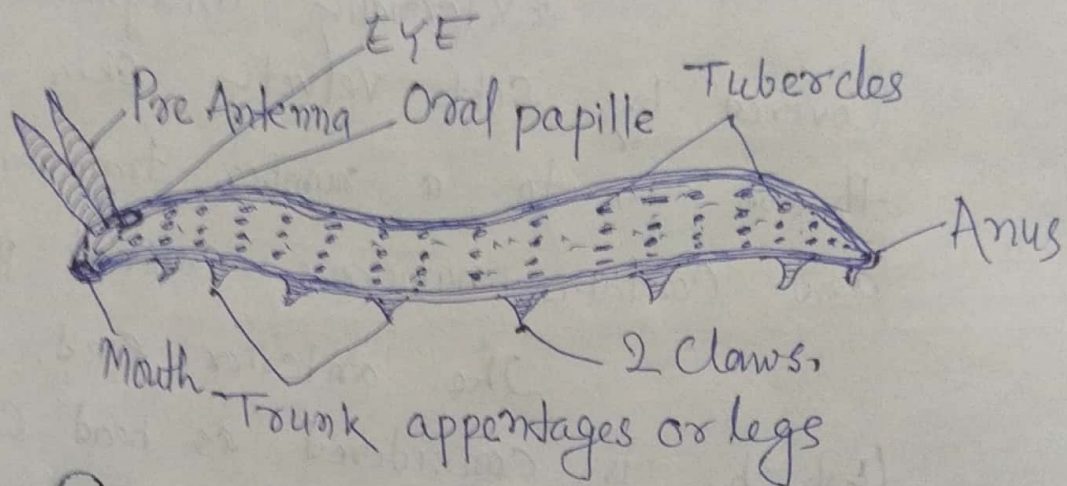


Fig. Side view of peripatus.

The anus opens at the blunt posterior end. The single genital pore open ventrally a little anterior to the anus.

The colouration of the body varies in different species which may be blue, green, orange or black.